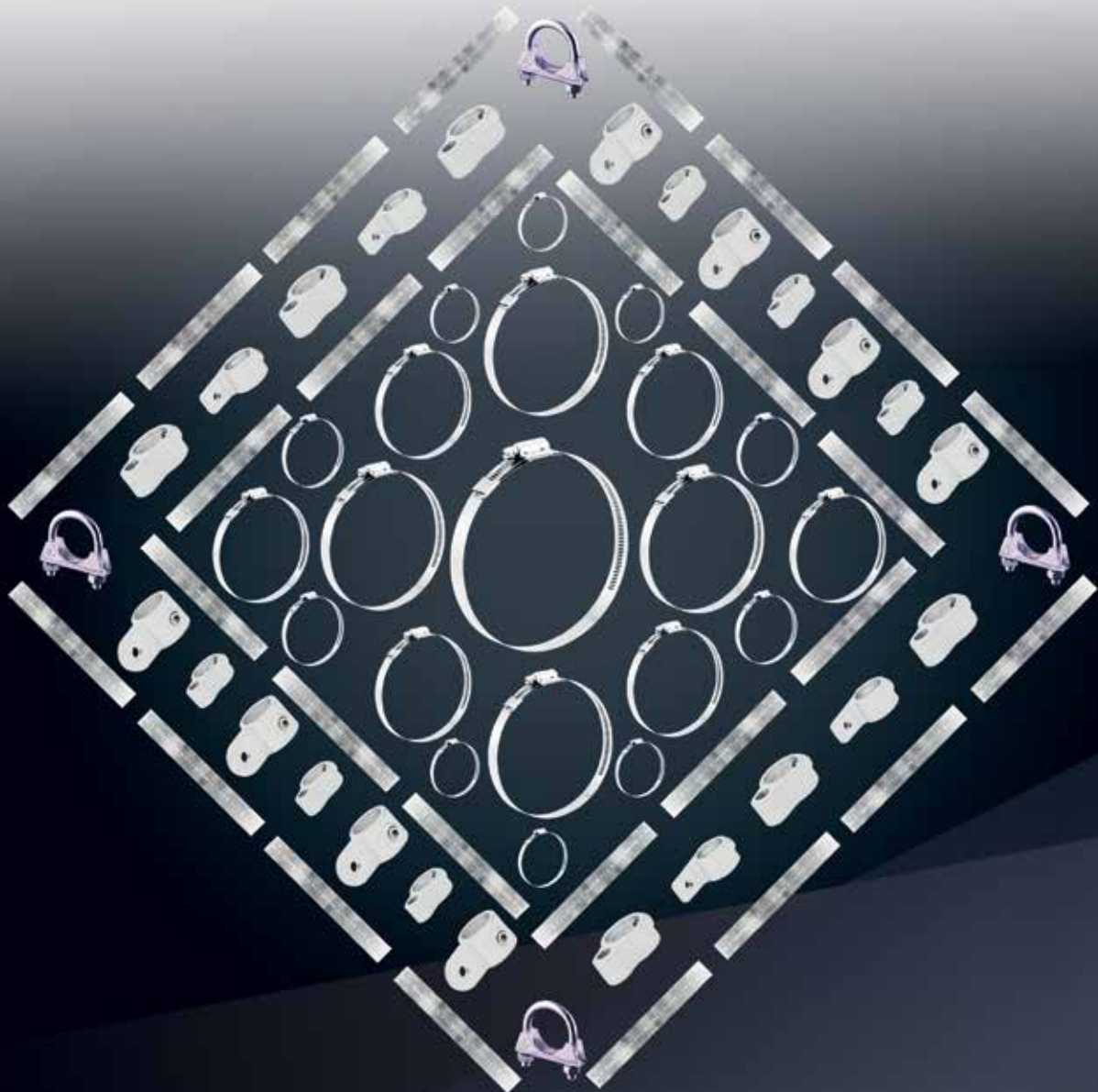


Customer Value through Innovation



Traffic Signage and Fixing Solution





NORMA Group – Customer Value through Innovation

An international market and technology leader in engineered joining technology

The company manufactures a wide range of innovative joining technology solutions in three product categories (clamp, connect and fluid) and offers more than 35,000 high-quality products and solutions to more than 10,000 customers in 100 countries. NORMA Group joining products can be found in vehicles and trains, ships and aircraft, buildings and water management as well as in applications for the pharmaceutical and biotechnology industry.

The company generated sales of around EUR 695 million in 2014. With around 6,000 employees, NORMA Group operates a global network of 22 production facilities as well as numerous sales and distribution sites across Europe, the Americas, and Asia-Pacific. NORMA Group has its headquarters in Maintal, Germany. NORMA Group SE is listed on the German stock exchange (Prime Standard) and included in the MDAX index.

NORMA Group –

Let NORMA traffic signage and fixing solutions show you the way

With less and less borders in Europe, there is the trend to unify the traffic signs. Many existing signs need to be replaced with the new harmonized signs. There are more than seven million kilometers of road network in Europe and billions of traffic signs are mounted. NORMA Group has been a partner of municipalities, construction companies, civil architects, traffic sign manufacturers and traffic sign fixing companies in providing signage and fixing solution over decades.

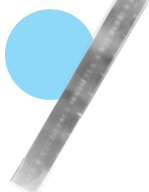
NORMA Group traffic signage and fixing solutions include clamps, continuous band, brackets, cable ties and tube clamp fittings. They can be used to fix signs on lampposts, mount billboards or fix any other signage devices.

Our multi-use solutions will help you to save installation time and reduce complexity. And our engineers are continuously working on developing further clamping and fixing solutions for you.



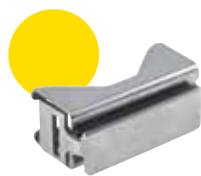
NORMA Hi-Torque

- Applications:**
- Lamppost
 - Flag pole
 - Firm pole



NORMA NORMETTA

- Applications:**
- Lamppost
 - Flag pole
 - Firm pole



NORMA Stainless Steel Bracket

- Applications:**
- Lamppost
 - Firm pole



NORMA Aluminium Bracket

- Applications:**
- Lamppost
 - Firm pole



NORMA Protection Tape

- Applications:**
- Lamppost
 - Firm pole



NORMA Tube Clamp Fittings

- Applications:**
- Billboard



NORMA Pipe Clamps

- Applications:**
- Firm pole



ABA Low Profile Cable Ties

- Applications:**
- Lamppost
 - Flag pole
 - Firm pole
 - Billboard



NORMA Cable Ties

- Applications:**
- Lamppost
 - Flag pole
 - Firm pole
 - Billboard

Band and Clamp



Hi-Torque

The Hi-Torque signage clamp is produced using components entirely manufactured from stainless steel. The construction of the worm-drive housing on the band facilitates installation of a wide range of signs. The recommended tightening torque for secure and reliable installation is 16 Nm and the breaking torque is more than 20 Nm.

Advantage at a glance

- Additional small buckle keeps the band align with the clamp after tightening
- Extremely strong clamp for higher mechanical loads
- Five clamps cover clamping range from 32m to 384mm

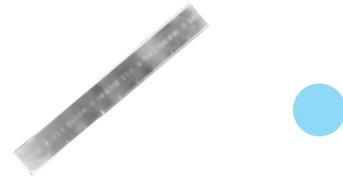
Band width: 16 mm
Material: W4



NORMETTA

Consisting of a continuous smooth band; able to adapt to the shape and size of various objects

Band width: 9, 13, 16, 19 mm
Band length: 30 mm
Material: W4

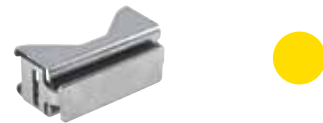


Brackets



Stainless Steel Bracket

Produced using components entirely manufactured from stainless steel
Material: Stainless Steel



Aluminum Bracket

Two prefixed bolts included
Material: Aluminum



Pipe Fittings and Clamp



Tube Clamp Fittings

28 clamp sharps ensure flexible installation
Diameter: 26.9, 33.7, 42.4, 48.3, 60.3 mm
Material: Malleable galvanized iron



Pipe Clamp

Suitable for use wide range of pipe diameters
Diameter: 25, 28, 32, 35, 38, 42, 45, 48, 51, 54, 57 mm
Material: W1



Protection Tape



Lamppost Protection Tape

Separate the stainless steel band from lamppost
Length: 2.4, 4.8, 10 m
Material: EPDM



Cable Ties



Standard Cable Ties

Quick securing and fastening of advertisements and flags
Band width: 2.2, 2.5, 3.5, 4.5, 4.8, 7.5, 7.8, 9, 12.5 mm
Material: PA 6.6



Low Profile Cable Ties

Smooth, Snag-proof contour has no barbs or spikers to injure an installer, technician or user
Band width: 4.52, 7.62 mm
Material: PA 6.6



Pliers and Accessories



Hi-Torque T-Screwdriver



NORMETTA Buckle



NORMETTA Clamping and Cutting Tool



Cable Tie Plier



Tube Clamp Fittings Hexagonal Key



Tube Clamp Fitting Spare Screws



Tube Clamp Fitting Aluminum End Cap



Tube Clamp Fitting Plastic End Cap

NORMA Group

Postfach 1149 · 63461 Maintal
Edisonstraße 4 · 63477 Maintal
Tel.: +49 (0) 61 81 403-0
Fax: +49 (0) 61 81 403-210
Web: www.normagroup.com
Email: info@normagroup.com